



notes
 this drawing and design is the copyright of oja architects llp and must not be reproduced in part or in whole without prior written consent. contractors must work to dimensions on the drawing before commencing work or producing shop drawings.
 where this drawing contains any Ordnance Survey mapping material, it has been reproduced under license number 100022028.
 Ordnance Survey © Crown copyright

- Key**
- New M69 Slip Lanes
 - A47 Link Road
 - A47 Link Bridge Crossing
 - Estate Roads
 - Railport - Sidings
 - Railport - Container Storage
 - Lorry Park, Energy Services & Drivers Welfare
 - Site Hub
 - Building Footprints
 - External Yards
 - Parking Areas
 - Water Features and Ponds
 - New Bridleway within main HNRFI site
 - New landscaping within main HNRFI site
 - Well Being Zone
 - Existing surrounding landscaping and farmland
 - Existing woodland
 - Existing alignment of public footpaths and bridleways (orange)
 - Proposed alignment of public footpaths and bridleways (blue)
 - Proposed alignment of pedestrian footpath / cycleway link (purple)

no.	date	revision
A	24.11.23	Red line by locations revised

oja architects
 oja architects llp
 1170 Elliott Court
 Herold Avenue
 Coventry Business Park
 COVENTRY CV5 6UB
 T: 024 7625 3200
 F: 024 7625 3210
 E: oja@oja-architects.com
 W: www.oja-architects.com
 AJA Architects is the trading name of AJA Architects Consulting Limited (company no. 08771672) and AJA Architects LLP (limited liability partnership registered in England no. OC26251) client

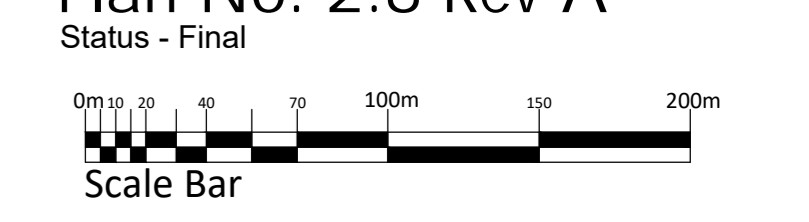
TRITAX SYMMETRY
 A TRITAX BIG BOX COMPANY

project
HINCKLEY NATIONAL RAIL FREIGHT INTERCHANGE

drawing
Illustrative Masterplan

scale 1:2500 @ A0 drawn mjl
 checked mjl date November 2022

Regulation no.5(2)(o)
Plan No: 2.8 Rev A
 Status - Final



Schedule of Accommodation
 All areas are gross internal

Unit	Distribution	Offices	Total	Car Parking	Lorry Parking	Height
01	61,435 sq.m.	2,787 sq.m.	64,222 sq.m.	534 no. spaces	114 no. spaces	Up to 22m
02	25,315 sq.m.	1,208 sq.m.	26,524 sq.m.	221 no. spaces	45 no. spaces	Up to 22m
03	25,548 sq.m.	1,115 sq.m.	26,663 sq.m.	222 no. spaces	53 no. spaces	Up to 22m
04	44,825 sq.m.	2,090 sq.m.	46,915 sq.m.	391 no. spaces	63 no. spaces	Up to 22m
05	32,702 sq.m.	1,672 sq.m.	34,374 sq.m.	286 no. spaces	51 no. spaces	Up to 28m
06	130,992 sq.m.	4,645 sq.m.	135,637 sq.m.	1130 no. spaces	191 no. spaces	Up to 25m
07	95,225 sq.m.	2,369 sq.m.	97,594 sq.m.	813 no. spaces	76 no. spaces	Up to 22m
08	76,551 sq.m.	2,369 sq.m.	78,920 sq.m.	658 no. spaces	63 no. spaces	Up to 28m
09	128,948 sq.m.	3,252 sq.m.	132,200 sq.m.	1102 no. spaces	180 no. spaces	Up to 25m
Total			643,049 sq.m.	5,357 no. spaces	836 no. spaces	
Railport			465 sq.m.	99 no. spaces		
Lorry Park & Drivers Welfare			465 sq.m.	11 no. spaces	104 no. spaces	
Amenity & security Offices			465 sq.m.	18 no. spaces		
Total Development			644,444 sq.m.	5,485 no. spaces	940 no. spaces	

*1 The height noted, is based upon the maximum level of any building or structure Above Ordnance Datum (A.O.D.) as defined on the Parameters Plan, Plan 2.12, for part of the overall plot, with the balance being restricted to the lower A.O.D. also defined on the Parameters Plan.

M69 - J2